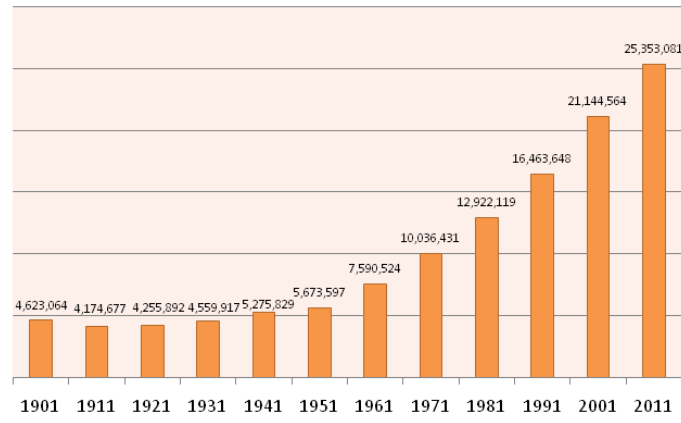


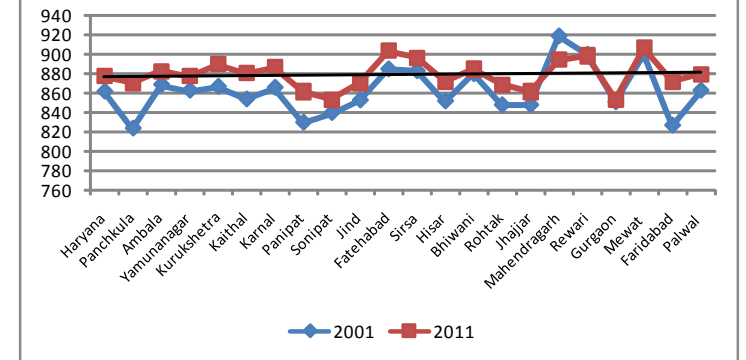
Population of Haryana since 1901



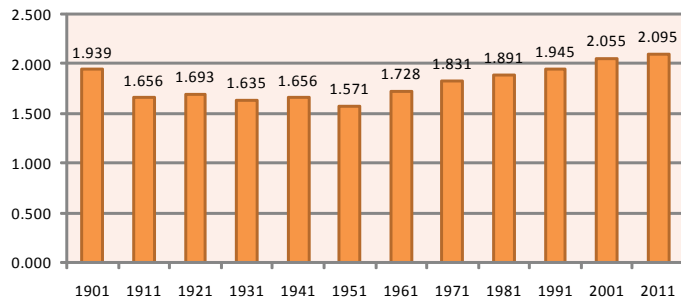
Census of India 2011

PROVISIONAL POPULATION TOTALS
HARYANA
DATA SHEET

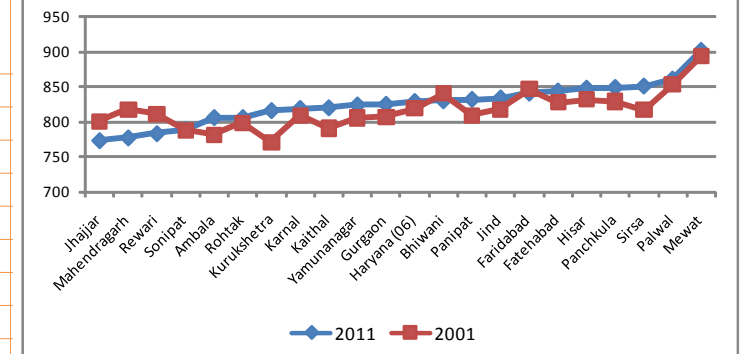
Sex Ratio



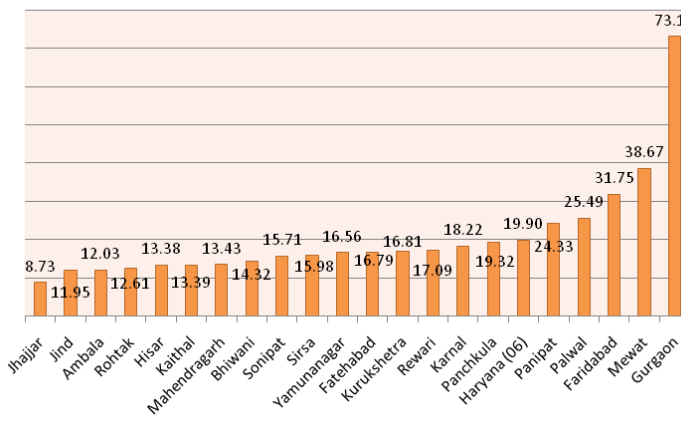
Percentage of share of Haryana's Population in India



Child Sex Ratio in the age group 0-6



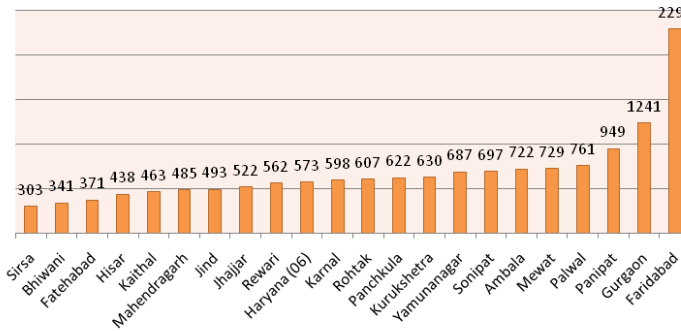
Decadal growth in percentage-2011



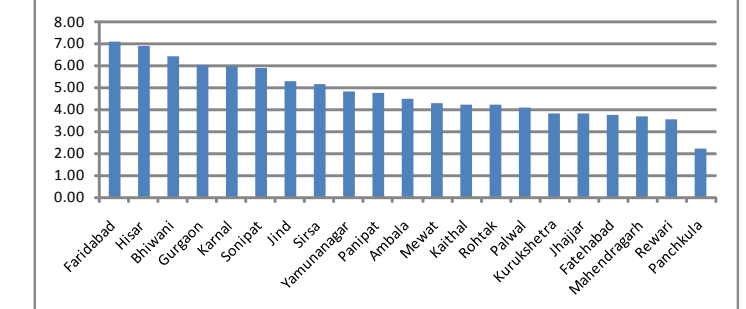
State/ District Code	State/ District	Population			Growth Rate (Total Pop) 2001-2011	Sex Ratio	Percentage 0-6 population	Sex Ratio 0-6 pop	Literacy Rate (Persons)	Literacy Rate (Males)	Literacy Rate (Females)
		Persons	Males	Females							
06	HARYANA	25353081	13505130	11847951	19.9	877	13.0	830	76.6	85.4	66.8
01	Panchkula	558890	298919	259971	19.3	870	11.7	850	83.4	88.6	77.5
02	Ambala	1136784	604044	532740	12.1	882	10.9	807	82.9	88.5	76.6
03	Yamunanagar	1214162	646801	567361	16.6	877	11.8	825	78.9	85.1	72.0
04	Kurukshetra	964231	510370	453861	16.8	889	12.0	817	76.7	83.5	69.2
05	Kaithal	1072861	570595	502266	13.4	880	12.6	821	70.6	79.3	60.7
06	Karnal	1506323	798840	707483	18.2	886	12.9	820	76.4	83.7	68.3
07	Panipat	1202811	646324	556487	24.3	861	13.7	833	77.5	85.4	68.2
08	Sonipat	1480080	798948	681132	15.7	853	12.7	790	80.8	89.4	70.9
09	Jind	1332042	712254	619788	12.0	870	12.4	835	72.7	82.5	61.6
10	Fatehabad	941522	494834	446688	16.8	903	12.6	845	69.1	78.1	59.3
11	Sirsa	1295114	683242	611872	16.0	896	11.9	852	70.4	78.6	61.2
12	Hisar	1742815	931535	811280	13.4	871	12.1	849	73.2	82.8	62.3
13	Bhiwani	1629109	864616	764493	14.3	884	12.6	831	76.7	87.4	64.8
14	Rohtak	1058683	566708	491975	12.6	868	11.9	807	80.4	88.4	71.2
15	Jhajjar	956907	514303	442604	8.7	861	12.1	774	80.8	89.4	71.0
16	Mahendragarh	921680	486553	435127	13.4	894	11.9	778	78.9	91.3	65.3
17	Rewari	896129	472254	423875	17.1	898	12.5	784	82.2	92.9	70.5
18	Gurgaon	1514085	817274	696811	73.9	853	13.1	826	84.4	90.3	77.6
19	Mewat	1089406	571480	517926	37.9	906	22.3	903	56.1	73.0	37.6
20	Faridabad	1798954	961532	837422	31.7	871	13.2	842	83.0	89.9	75.2
21	Palwal	1040493	553704	486789	25.5	879	16.5	862	70.3	82.6	56.4

Source: Series-7 Provisional Population Totals Paper-I of 2011

Density- Population per sq.km



District-wise share of Population in Percentage



Directorate of Census Operations, Haryana
Ministry of Home Affairs, Govt. of India
Plot No. 2B, Madhya Marg, Sector-19A, Chandigarh
Phone No. 0172- 2542106, 2780408